

Project Location: Platteville, Wisconsin

Project Overview:

- The project constructed a new farrow-to-finish swine facility with a unique manure collection system. The facility was designed with a slatted floor system over a solid manure/composting area with aerated floor. The connected facility includes a wing with grow-finish rooms and a wing with farrowing and breeding/gestation rooms with administrative facilities connecting the two wings.

Project Services:

- Curry-Wille and Associates provided livestock equipment, mechanical, and electrical design for the swine and administrative facilities. Services were provided for programming, schematic design, design development, construction documents, bidding, and construction administration.

Photos:



Aerial View



View from Back Side of Buildings

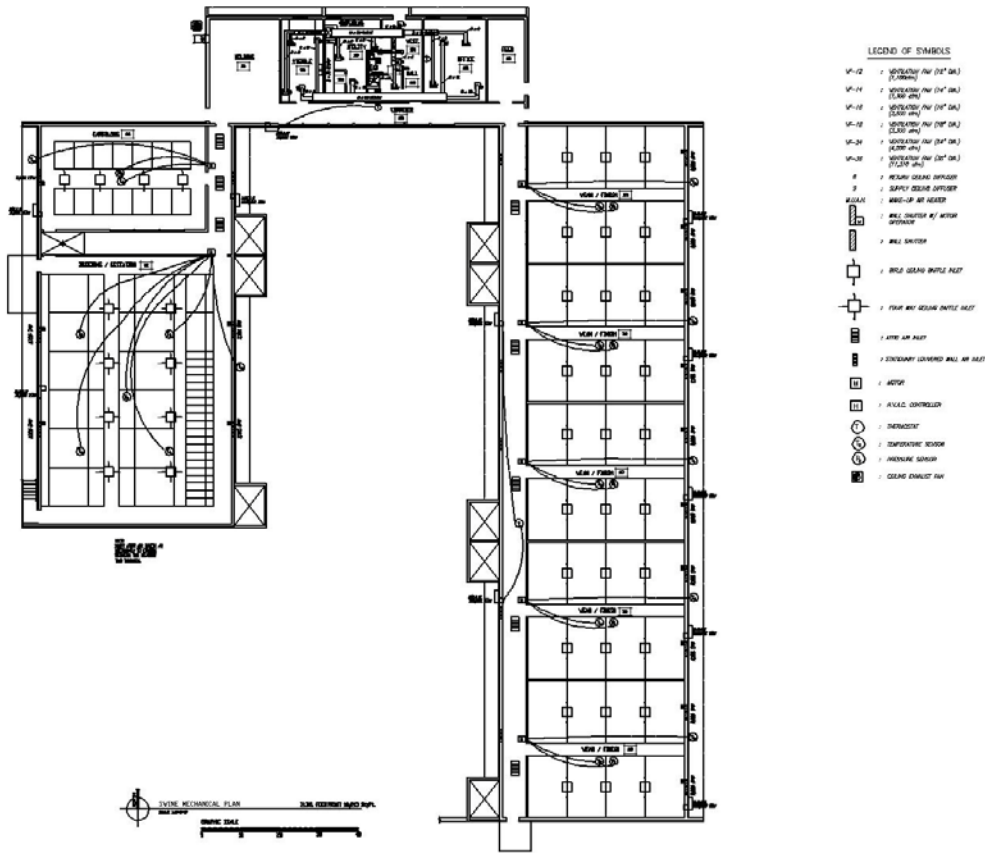


Manure Collection Area



Breeding/Gestation Room

Drawing Samples:



Mechanical Plan