

Project Location: Platteville, Wisconsin

Project Overview:

- The project constructed a new teaching, research, and demonstration dairy facility with lactating cow free stall housing for 200 cows, maternity pens, and milking facilities. The milking facilities include a conventional Double-5 Herringbone parlor and two Robotic Milking Units.

Project Services:

- Curry-Wille and Associates provided concrete, livestock and milking equipment, mechanical, and electrical design for the project. Services were provided for master planning, programming, schematic design, design development, construction documents, bidding, and construction administration.

Photos:



Front during Construction



Parlor under Construction

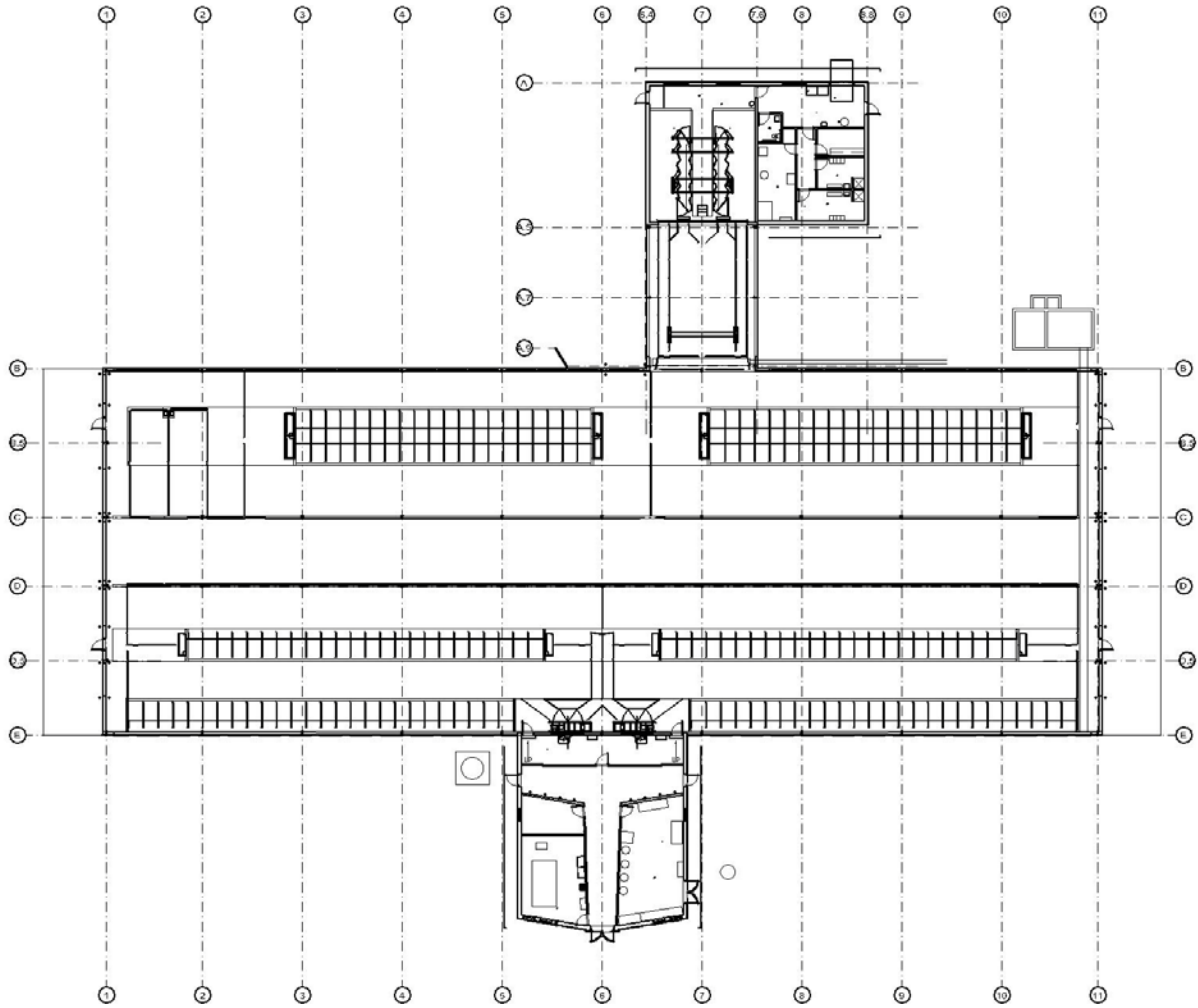


Free Stall Housing



Aerial View

Drawing Samples:



Floor Plan