

Project Location: Platteville, Wisconsin

Project Overview: layout and Design of Feed Center

- Design and layout of new feed center, which is also used to receive grain at 3,000 BPH. The new feed center services a dairy facility and a swine facility. The feed center includes a bucket elevator, hopper bottom storage bins, receiving conveyor, transfer conveyors, wet holding bin, relocated grain dryer, cooling bin, reclaim conveyors, office, and electrical room.

Project Services:

- Site layout
- Preliminary Design
- Equipment Layout and Sizing
- Construction Documents

Photos:



Under Construction



New Boot Pit enclosure

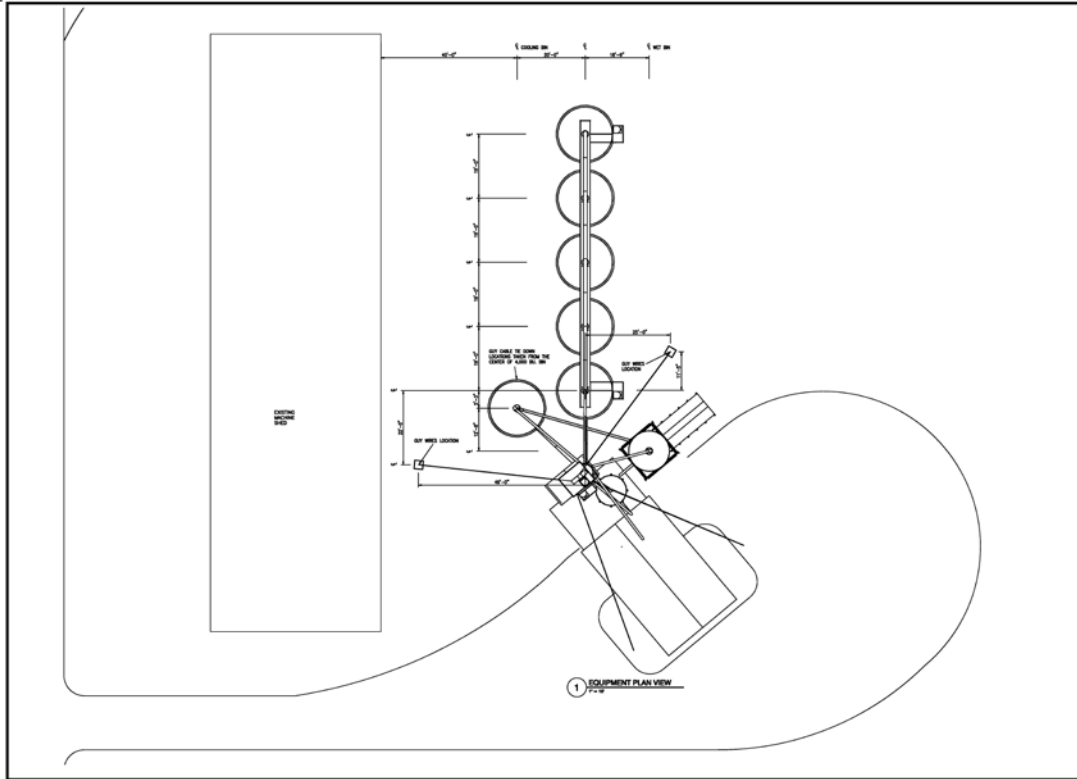


New Truck Scale

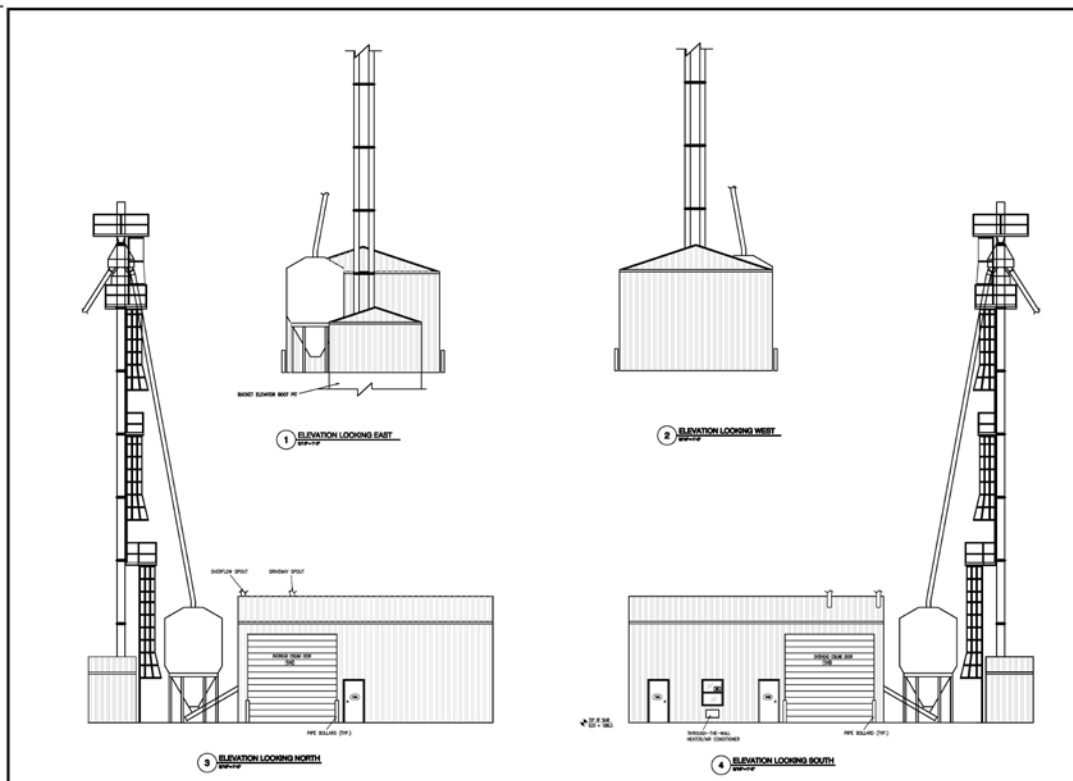


Storage Bins with Aeration

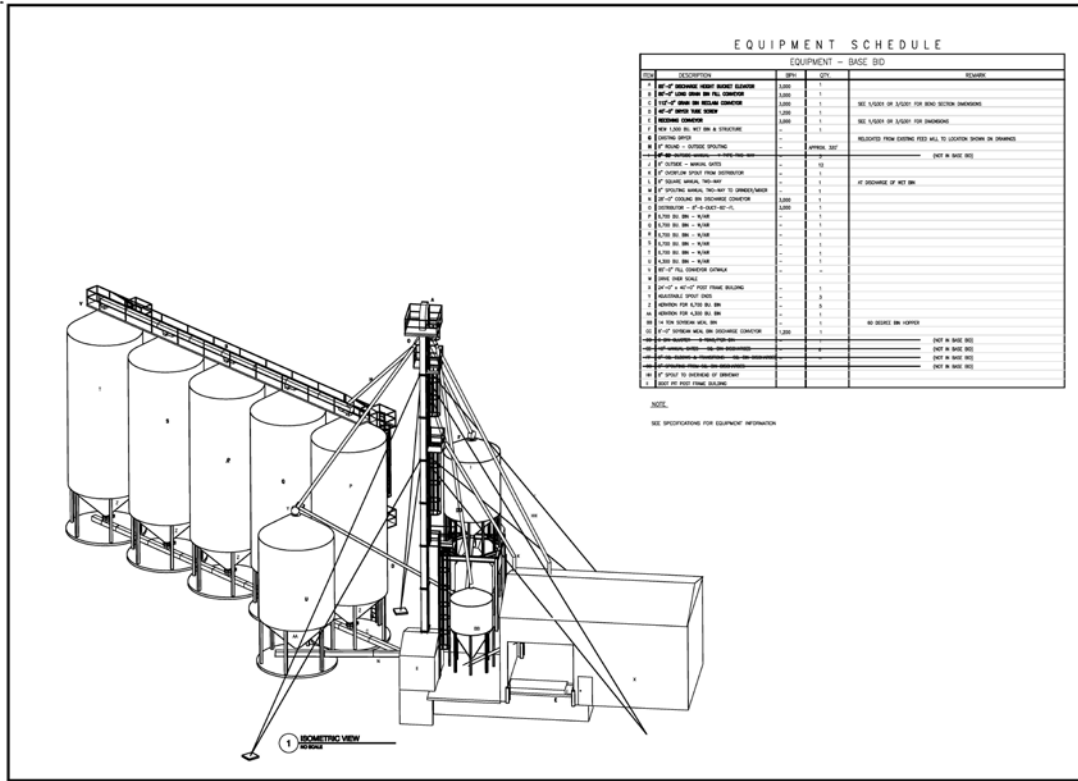
Drawing Samples:



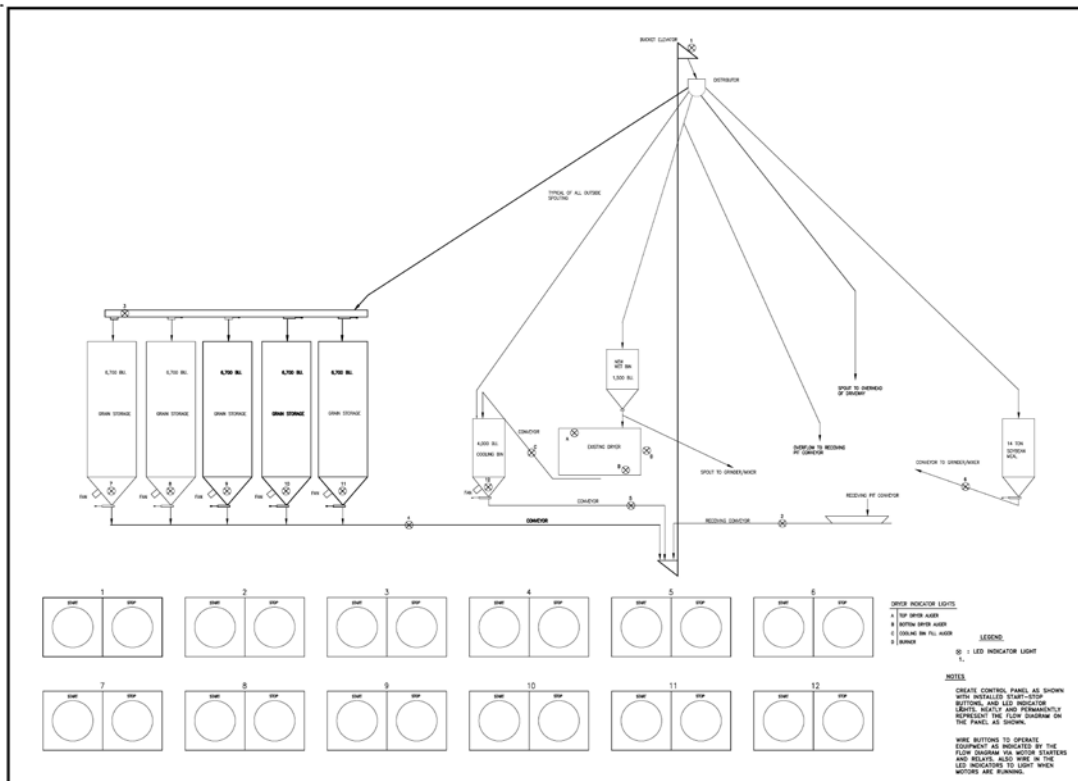
Preliminary Layout Plan



Elevations



3D Project layout Model



Electrical Start/Stop Push Button Diagram